



Product Guide



As a multinational agricultural company, Spraytec specialises in application technology and foliar fertilisers to improve profitability, maximise productivity, and ensure producer confidence. Our continued guarantee?

Use it once, trust it always.

Since our establishment in 1991, our innovative pulse has never slowed. We have maintained a vision of utilising our unique chemistry to enhance agricultural production with producer peace of mind at the forefront. Combining elements of crop health, nutrition and refined application technology, our solutions are clearly differentiated against current comparable industry products. Through the incorporation of homogeneous liquid formulations that are characterised with multiple functions, we can assure simplicity and practicality in a known heavily-saturated additive and phytostimulant market.. All this, without compromising in-field performance.

From humble beginnings, attaining international recognition was always the long-term objective. Through our innovative product range and valued commitment to producers, we have achieved this. With branches throughout South America, North America, Europe and Australia, we have guaranteed exposure to the world's largest agricultural markets. Our greatest evidence? Successfully treating over 400 million hectares globally. Looking forward, our mission is to maintain our core values of innovation, integrity and transparency, in consolidating network relationships and ensuring we are viewed as a trusted player in the industry.



- NORTH AMERICA**
 - USA
 - CANADA
- CENTRAL AMERICA**
 - HONDURAS
 - MEXICO
- SOUTH AMERICA**
 - ARGENTINA
 - BOLIVIA
 - BRAZIL
 - PARAGUAY
 - URUGUAY
- EUROPE**
 - BELGIUM
 - FRANCE
 - GERMANY
 - ITALY
 - RUSSIA
 - SPAIN
 - TURKEY
 - UKRAINE
- OCEANIA**
 - AUSTRALIA



A commitment to Australia

Arriving on Australian shores in 2019, we understood the demands required to grow our company profile. Through partnerships with multiple independent research organisations, we facilitated national trials to promote the benefits of our solutions to Australian growers. Our ongoing goals are to expand our research and development program, build on our existing and prospective industry networks, and work together as a collective, in guaranteeing the sustainability of agriculture in Australia. We are Spraytec, and we are here to stay.

A commitment to sustainability

With an ever-increasing world population and continual advancements in economic development exerting added pressure on natural resources, local ecosystems and climate, we must ensure the quality of our land for future generations. Expectations of increased productivity are obvious, as we seek to safeguard more resources and more food than ever demanded before. All this, while balancing our planet's biodiversity.

At Spraytec, we value our adaptability and ability to strategically position ourselves in response to these rising sustainability challenges. Emphasising our vision of 'anticipating the agriculture of the future' is to maximise efficient agricultural production without compromising human health or the natural environment during the lifecycle of any of our solutions.



We value sustainable product development and innovation

Our solutions promote sustainable agriculture and help producers generate more from their land with all-in-one liquid formulations that are 100% biodegradable.



We are conscious of our environmental footprint

Preserving our planet's natural resources for immediate and future generations is front-of-mind for us as we seek to minimise our waste, packaging and emissions.



We prioritise health, safety and wellbeing

Our people, clients, and communities are integral to the sustainability of not only our business, but our industry as a whole. Our contribution as a collective is what matters.



We advocate for industry transparency and integrity

Creating enduring connections through trust and credibility is what drives our success. We value collaboration with our partners, competitors and wider network.



We have lived and breathed trials for over 30 years. How else can you assure producer confidence in trusting product performance?

Committed, inspired and motivated, we will continue to uphold our company values of transparency, integrity and innovation, as we seek to consolidate our research and development program here in Australia.

Now more than ever, the distribution of reliable product data differentiates one company from another. In collaborating with multiple Australian independent research organisations and agronomy groups, we were able to promote credible product performance results to the wider industry. Continuing with this approach, we are also aiming to increase our own internal trial activity to ensure adaptability and flexibility to meet immediate industry issues or trends.

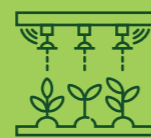


**INDEPENDENT TRIALS
SINCE 2019**

If you would like to access comprehensive trial reports, results and locations, please visit our dedicated trials page on our website at www.spraytecaustralia.com.au/trials

OUR CHEMISTRY IS DIFFERENT

We place a high value on developing innovative solutions that will benefit Australian producers. Formulated around application technology, nutrition and health, our solutions achieve this.



**Application
Technology**



Nutrition



Phosphites

FULLTEC®

Foliar Fertiliser



A multi-functional formulation that works to complement spray performance. Delivers convenience and practicality on-farm with low-use rates, full pesticide compatibility and does not require additional additives.

RECOMMENDED TIMING AND RATE:

- Knockdown or fallow = 0.1 % v/v
- In-crop = 100 mL/ha

GUARANTEED ANALYSIS (% W/V):

- Nitrogen 7.00%
- Phosphorus 6.50%

ADDITIVE REQUIRED

- No

CROP SUITABILITY:

- All crops & fallows

PRODUCT VOLUMES:

- 10L, 110L, 500L & 1000L



2008
FULLTEC
DEVELOPED

2019
AUSTRALIAN
LAUNCH

2024
40+
AUSTRALIAN
TRIALS

∞
100%
CROP
SAFE

FULLTEC MAX®

Foliar Fertiliser



The premium generation of Fulltec; complementing spray applications all-year-round. Possesses a unique blend of nutrients, phosphites and application technology that enhances crop productivity and profitability.

RECOMMENDED TIMING AND RATE:

- Knockdown or fallow = 0.1 % v/v
- In-crop = 100 mL/ha

GUARANTEED ANALYSIS (% W/V):

- Nitrogen 13.50%
- Phosphorus 3.90%

ADDITIVE REQUIRED

- No

CROP SUITABILITY:

- All crops & fallows

PRODUCT VOLUMES:

- 10L, 110L, 500L & 1000L



2015
FULLTEC MAX
DEVELOPED

2019
AUSTRALIAN
LAUNCH

2024
50+
AUSTRALIAN
TRIALS

∞
100%
CROP
SAFE

TOPZinc MAX

Foliar Fertiliser



Complements early foliar applications to promote crop health and productivity by providing essential zinc that accelerates plant growth. Increases pesticide efficacy and does not require additional additives.

RECOMMENDED TIMING AND RATE:
 • In-crop (vegetative phase) = 500 mL/ha

GUARANTEED ANALYSIS (% W/V):
 • Nitrogen 2.92%
 • Phosphorus 2.52%
 • Zinc 0.88%
 • Sulphur 0.68%
 • Boron 0.60%

ADDITIVE REQUIRED:
 • No

CROP SUITABILITY:
 • All crops

PRODUCT VOLUMES:
 • 10L, 110L, 500L & 1000L



INCLUDES
FULLTEC MAX
 TECHNOLOGY

CUBO IR



Specifically formulated to assist late foliar applications, strengthening plant defences and enhancing productivity. Application technology reduces losses via drift or evaporation, ensuring excellent application.

RECOMMENDED TIMING AND RATE:
 • In-crop (pre-flowering) = 300 mL/ha

GUARANTEED ANALYSIS (% W/V):
 • Copper 4.00%
 • Phosphorus 3.06%
 • Nitrogen 3.00%
 • Boron 2.25%
 • Sulphur 1.25%

ADDITIVE REQUIRED:
 • No

CROP SUITABILITY:
 • All crops

PRODUCT VOLUMES:
 • 10L, 110L, 500L & 1000L



INCLUDES
FULLTEC MAX
 TECHNOLOGY

Absortec COPPER

Foliar Fertiliser



An innovative formulation that assists late foliar applications to improve productivity by targeting crop health and nutrition. Increased nitrogen levels accelerate penetration, reducing losses and boosting yields.

RECOMMENDED TIMING AND RATE:
 • In-crop (pre-flowering) = 1 - 2 L/ha

GUARANTEED ANALYSIS (% W/V):
 • Nitrogen 18.50%
 • Phosphorus 1.00%
 • Sulphur 0.90%
 • Manganese 0.30%
 • Copper 0.20%
 • Boron 0.10%

ADDITIVE REQUIRED:
 • No

CROP SUITABILITY:
 • All crops

PRODUCT VOLUMES:
 • 10L, 110L, 500L & 1000L



INCLUDES
FULLTEC MAX
 TECHNOLOGY

TopSeed



Possessing a high-power polymer coating encompassing phytostimulant and anti-stress properties, ensures even emergence and improved crop performance. Provision of accessible nutrients promotes plant health.

RECOMMENDED TIMING AND RATE:
 • Seed treatment partner = 300 mL/100 kg seed

GUARANTEED ANALYSIS (% W/V):
 • Potassium 3.80%
 • Zinc 2.20%
 • Molybdenum 2.03%
 • Phosphorus 1.90%
 • Cobalt 0.72%
 • Silicon 0.65%
 • Boron 0.50%

CROP SUITABILITY:
 • All crops

PRODUCT VOLUMES:
 • 10L



OMEGA



Dedicated supplement tank cleaner that neutralises and emulsifiers all organic, oil, and active ingredient residues left in spray tanks. Low surface tension, latest surfactant technology and an effective descaler ensures deep cleaning of spray equipment.

RECOMMENDED TIMING AND RATE:

- 300-500 mL/100L

GUARANTEED ANALYSIS (% W/V):

- Potassium Hydroxide 20.00%

CROP SUITABILITY:

- All crops

PRODUCT VOLUMES:

- 10L



Twin Pack MAX



Developed to minimise the harmful effects caused by pesticides, in addition to improving plant nutrition and tolerance to climatic stress. Comprises of a high-tech formulation that allows rapid absorption with excellent operational performance.

RECOMMENDED TIMING AND RATE:

- In-crop (vegetative) = 200-500 mL/ha

GUARANTEED ANALYSIS (% W/V):

- Manganese 6.00%
- Phosphorous 5.00%
- Sulphur 3.80%
- Potassium 2.50%
- Nitrogen 1.00%
- Zinc 0.70%
- Molybdenum 0.50%
- Boron 0.10%
- Copper 0.10%

ADDITIVE REQUIRED:

- No

CROP SUITABILITY:

- All crops

PRODUCT VOLUMES:

- 5L



OPTIMIX



Revolutionary supplement specifically developed to assist tank mixing. Designed for use with a broad range of chemicals.

RECOMMENDED TIMING AND RATE:

- Preventative = 100-200 mL/ha
- Corrective = 200-400 mL/ha

GUARANTEED ANALYSIS (% W/V):

- Potassium 20.00%

CROP SUITABILITY:

- All crops

PRODUCT VOLUMES:

- 10L



ULTRAZEB INOX



Designed to bolster any in-crop foliar agrochemical applications. Beneficial trace nutrition and application technology align with an effective fungistatic effect to reduce disease severity and improve overall productivity.

RECOMMENDED TIMING AND RATE:

- In-crop (pre-flowering) = 300 mL/ha

GUARANTEED ANALYSIS (% W/V):

- Manganese 5.00%
- Zinc 5.00%
- Chlorine 5.00%
- Sulphur 4.00%
- Copper 2.50%
- Boron 0.20%

ADDITIVE REQUIRED:

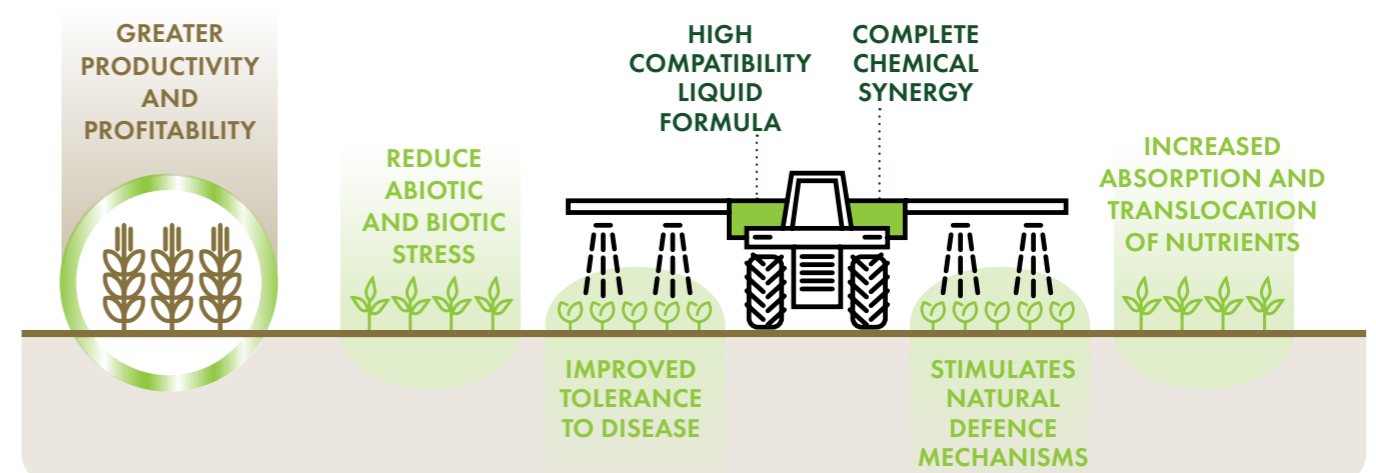
- No

CROP SUITABILITY:

- All crops

PRODUCT VOLUMES:

- 5L



Ultra Zn MAX



Offering as a fully synergistic pesticide partner, activates multiple metabolic processes to reduce phytotoxicity. Beneficial zinc content promotes balanced nutrition, increasing natural crop tolerance to disease and abiotic stresses.

RECOMMENDED TIMING AND RATE:
 • In-crop (pre-flowering) = 200-500 mL/ha

GUARANTEED ANALYSIS (% W/V):
 • Zinc 8.00%
 • Manganese 2.50%
 • Sulphur 1.40%

ADDITIVE REQUIRED:
 • No

CROP SUITABILITY:
 • All crops

PRODUCT VOLUMES:
 • 5L



Ultra Mn MAX



Encapsulates Spraytec's unique nutrient, phosphite and application technology recipe to promote a nutritional balance and reduce any harmful herbicidal effects. Increases chlorophyll synthesis and photosynthetic activity to bolster productivity.

RECOMMENDED TIMING AND RATE:
 • In-crop (pre-flowering) = 200-500 mL/ha

GUARANTEED ANALYSIS (% W/V):
 • Manganese 9.00%
 • Sulphur 5.00%
 • Copper 0.30%
 • Cobalt 0.10%

ADDITIVE REQUIRED:
 • No

CROP SUITABILITY:
 • All crops

PRODUCT VOLUMES:
 • 5L



Ultra K MAX



Acting directly on crop energy metabolism, endorses maximum translocation of photoassimilates from vegetative to reproductive structures present in plants. With balanced nutrition, total grain productivity is enhanced to bolster profitability.

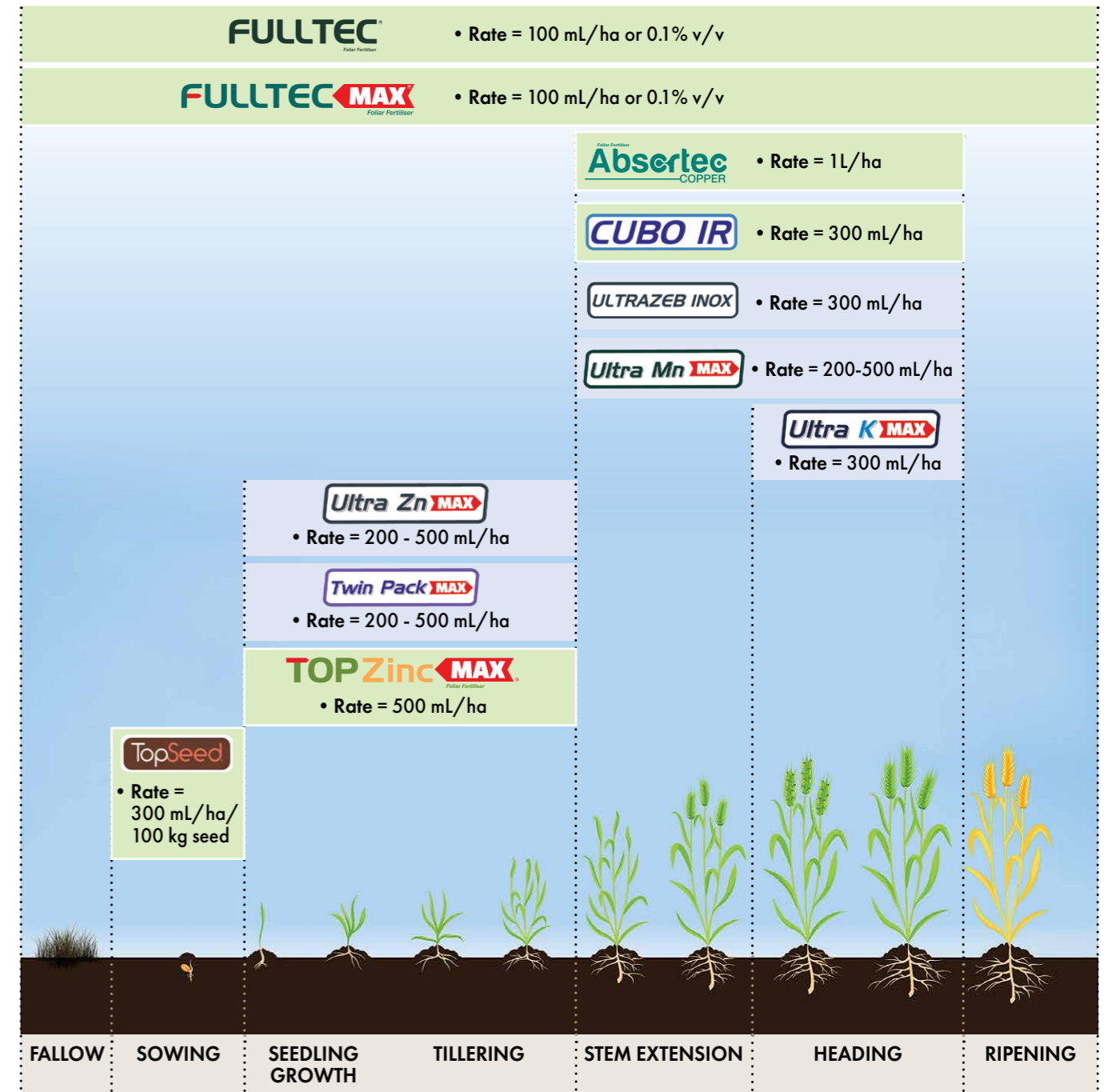
RECOMMENDED TIMING AND RATE:
 • In-crop (pre-flowering) = 300 mL/ha

GUARANTEED ANALYSIS (% W/V):
 • Potassium 7.47%
 • Boron 1.90%
 • Cobalt 0.30%

ADDITIVE REQUIRED:
 • No

CROP SUITABILITY:
 • All crops

PRODUCT VOLUMES:
 • 5L



Note: Costs are approximates according to current RRP.

Most mixing issues arise from errors. These can be avoided by adhering to the correct mixing order and allowing sufficient time between chemical additions. Take your time and be patient to avoid mistakes.

Step 1 Ensure tank and flush lines are clean.

Step 2 With agitation, fill tank to 90% capacity.

Step 3 Maintaining agitation, add selected spraytec product.

Step 4 Allow a reasonable mixing period to maximise product activity.

Step 5 Add other selected chemicals as per their label recommendations.

Step 6 Maintain agitation, fill tank to 100% capacity.

Our solutions need to be added prior to any other chemical to ensure quality of performance.

Are all of Spraytec's solutions applicator and machinery friendly?

Yes. Incorporating a homogenous liquid base, our solutions will ensure ease of handling with no requirement to be shaken, diluted or dissolved separately. All solutions are readily water-soluble and will not contribute to hose or nozzle build-up.

Can I use Spraytec's solutions in-crop?

Yes. All our solutions are 100% crop safe. For every in-crop trial protocol, we assess for any phytotoxicity or plant biomass reductions. Results from all in-crop trials clearly define that our solutions will not compromise crop safety in any way.

Why do all of Spraytec's solutions not require the addition of an adjuvant(s)?

Initial development of our solutions targeted a foliar fertiliser base that included a highly unique additive package to ensure practicality and assist plant uptake. Following extensive independent trials that identified a clear market gap, our solutions incurred rate reductions to ensure compatibility within any chemical mix or application as the primary spray tank partner.

What are the benefits of incorporating application technology within all of Spraytec's solutions?

Application technology refers to the many variables that affect the efficacy of a spray application. Factors revolve around 3 key stages in the spray process; conditions in the spray tank, movement from nozzle to leaf, and activity once on the leaf. Spraytec's solutions work across all 3 of these stages to ensure chemical efficacy is maximised.

Who should I contact to find out more about Spraytec's solutions?

Our representatives are always happy to chat and answer all questions. We advise directly reaching out to your local contact as listed on the back of this brochure. As an alternative, your local retailer or agronomist is a fantastic reference and should be able to acquire the relevant information or contact for you.

Where am I able to access Spraytec's solutions?

With warehouses in Perth, Sydney and Melbourne, we can guarantee timely accessibility to our solutions.

COMPLIMENTARY WATER ANALYSIS

Importance of water quality

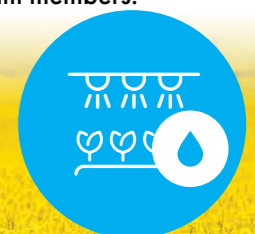
Using poor water when spraying can adversely impact the performance of many agricultural products. Such detriments include reduced solubility, chemical breakdown, reduced herbicidal activity, and even potential equipment defects. Ultimately, mismanagement, or simply unawareness to potential issues, will affect whole farm operations as target pests are not adequately controlled, which may lead to increased economic costs.

Are you eligible?

If you have used our products in the past, or are intending on becoming a new customer, you are permitted to utilise our complimentary water testing service.

Where can you find out more?

If you would like to explore further, please contact your local retailer or agronomist to acquire water sample bottles, or get in touch with one of our Spraytec team members!



CLIENT TESTIMONIALS



NAME: Nigel Routledge
LOCATION: Northampton, WA
ROLE: Branch Manager/
 Agronomist
BUSINESS: Independent Rural



Independent Rural have been using and recommending Spraytec products for three seasons now across our three stores in Geraldton, Perenjori and Northampton. Many of our growers have commented on the ease of use of the product with super low use rates, complete chemical compatibility, and the ability to leave ammonium sulphate out of the brew in many situations. It also has been priced competitively and the ability to use it in crop as well, makes it a fantastic, all year-round adjuvant.

NAME: Tim Springbett
LOCATION: York, WA
ROLE: Grower
BUSINESS: 4,000ha growing cereals, canola and export hay



The 2021 Dowerin Field Days was where I first came across Spraytec.. Initially using some sample product of Fulltec Max, I have now utilised Fulltec Max across my entire spraying program for the last two seasons. It is easier to handle than other adjuvants and I particularly like the antifoam feature. I haven't had any issues with foaming or compatibility since using the product. Drift and droplet size has also improved.

NAME: Stewart Avery
LOCATION: Cadoux, WA
ROLE: Grower
BUSINESS: 4,000ha growing cereals, canola and lupins, 850ha of pasture, 870 mated Merino ewes



I first heard about Spraytec when the team visited our local rural supplies store. They introduced us to Fulltec Max through tank mix and spray drift demonstrations which I found extremely impressive. With my agronomist, we trialled Fulltec Max and the results were instant; a quicker burn down time and less drift. We have been using Fulltec Max with just about everything now, with better clethodim activity on grasses and paraquat pulling bigger weeds down. The ease of using Fulltec Max is great, low rates and one product. Anything to make life easier.

NAME: Digby Willmott
LOCATION: Cunderdin, WA
ROLE: Grower
BUSINESS: Grain and livestock



I was introduced to Spraytec by my agronomist whom encouraged me to trial Fulltec and Fulltec Max with our knockdown work. We continued incorporating Fulltec Max in later knockdowns with and without spikes and were amazed with its brownout effect on hard to kill weeds in various spray conditions. We have also trialled Fulltec Max with our post-em grass spray program in both cereals and pastures, along with glyphosate applications in post-em RR Canola sprays. In our experience over the last two years, Fulltec Max removes the addition of spray oils, wetters and conditioners from the spray mix, reducing fill times. This ensures a hassle free, cost effective and extremely compatible adjuvant to use from the start of the year with summer spraying, right through the growing season. Fulltec Max – why don't you try it for yourself?

NAME: Byron Birch
LOCATION: Moree, NSW
ROLE: Branch Manager/
 Agronomist, Grower
BUSINESS: B&W Rural, family farm



I'm passionate about finding products and systems to advance agricultural productivity. I came across Fulltec Max when we were defoliating cotton in June 2022 as I had heard of some success in southern NSW cotton regions. Cotton slows considerably in low temperatures and slow leaf drop is an issue as it delays harvest. Our side-by-side comparison proved successful with the substitution of Fulltec Max instead of crop oil improving leaf drop by 4 days. I have since been using Fulltec Max in herbicide applications targeting hard to kill weeds with the hope it will increase plant herbicide uptake.

BUSINESS: South East Rural Traders
LOCATION: Esperance, WA
TEAM: Luke & Lisa Marquis, Chad Holten, Nat Wedderburn, Sam Stubna, Cam Quenby & Mark Welk
SERVICES: AgChem, agronomy



Our team initially had experience with Spraytec's Fulltec Max across trial programs and were pleased with results. The consensus from the agronomy team is that if trial data shows an equivalent or better result to standard practice, then a new product is worth considering. The introduction of Fulltec Max into our growers' summer spray program has been straightforward. Moving away from manually handling bags of SOA and drums of wetter to one product, Fulltec Max, has been an easy transition. The proven in-paddock performance, comparative pricing, and improved handling make for a logical switch to Fulltec Max. We anticipate trialling further Spraytec solutions into 2024, and we will continue to use their products in our production systems where we see a fit.

NAME: Stott & Charmaine Redman
LOCATION: Hopetoun, WA
ROLE: Grower
BUSINESS: 18,800ha growing wheat and canola



Maximising efficiency and simplicity are at the forefront of my business particularly with the scale we operate at. Being introduced to Fulltec Max by my local retailer and agronomist, I was attracted by its multifunctional activity. Following this, I committed to Fulltec Max across my entire summer spray program, observing equivalent results to previous adjuvant combinations without the hassle of handling multiple products. Depending on extensive in-crop trial results, I'm intrigued by Fulltec Max's all-year-round potential.

NAME: Tom Longmire
LOCATION: Esperance, WA
ROLE: Grower
BUSINESS: 6,000ha of cereals, canola and field peas



Early 2020 was our first exposure to Fulltec Max, as we trialled performance in summer spray applications to build confidence. We observed very efficient filling and mixing times, as the product is a bit of an all-in-one; suck 100 mL/ha and you're onto your next product! Fulltec Max has since become an integral part of our spraying operation, whether it's knockdowns, double-knocks, fungicides or grass-selective herbicides, every time we're going across the paddock, we're putting Fulltec Max in.





Get in touch!

If you would like to explore additional product information, access comprehensive trial reports, hear client testimonials, or explore current promotions, please visit our website at www.spraytecaustralia.com.au or call 1300 422 501.

For direct contact, please reach out to your local Spraytec representative;

LOCATION	CONTACT	POSITION	PHONE
NATIONAL	Marcelo del Barro	National Manager	0457 868 413
	Gonza Taboada	Operations Manager	(08) 9433 4246
	Jeremy Samson	Research Agronomist	0436 686 866
NSW	Chris Edwards	Sales Agronomist	0472 717 215
SA & VIC	Simon Angelino	Sales Agronomist	0456 769 969
WA	Robert Pattison	Sales Agronomist	0400 794 957
	Martin Terrestre	Sales Agronomist	0409 121 802



Spraytec has compiled this information to its best ability and in alignment with industry protocols. The information and recommendations derived are based on trials and results determined to be consistent at the time of publication. Always used as directed and in agreement with label instructions.

© 2023 Spraytec Australia. All Rights Reserved.

1300 422 501



www.spraytecaustralia.com.au